

Relocating a home across state lines or moving an entire business in a busy metropolitan area like :contentReference[oaicite:0]index=0 requires careful coordination, professional execution, and a deep understanding of logistics. Whether you are planning a long-distance household move or a complex office relocation, working with experienced movers can significantly reduce stress, minimize downtime, and protect your assets.

This complete guide explains how long-distance movers and office relocation experts operate, what services they provide, and how to plan a smooth and efficient transition from start to finish.

Understanding Long Distance and Office Relocation Services

Long-distance movers specialize in transporting goods across cities, states, and sometimes nationwide routes. Office relocation experts focus on moving business environments such as corporate offices, warehouses, and commercial facilities with minimal disruption to operations.



ATLANTA MOVING COMPANIES

Best Atlanta Mover's
3768 Campbellton Rd SW, Atlanta, GA 30331, United States
(404) 369-4648

The advertisement features a circular logo with a truck icon and the text 'Best Atlanta Mover'. Below the logo, the company name 'ATLANTA MOVING COMPANIES' is written in bold orange letters. The contact information is listed in black text. A photograph on the right shows two movers in blue uniforms loading cardboard boxes onto a white truck with a red stripe.

While both services involve transportation, office moves require additional planning for technology systems, employee coordination, and business continuity.

Key Differences Between Residential and Office Moves

Residential Long-Distance Moves

- Focus on household belongings and personal items
- Flexible scheduling based on customer availability
- Emphasis on packing and protection of fragile goods

Office and Commercial Relocations

- Require structured downtime reduction strategies
- Include IT systems, servers, and sensitive equipment
- Must coordinate employees, departments, and operations
- Often completed in phases or after business hours

Office moves demand higher precision because even a few hours of downtime can impact productivity and revenue.

Step-by-Step Planning for a Successful Move

Proper planning is the foundation of any successful relocation. Whether moving a household or a business, following a structured timeline ensures fewer delays and fewer unexpected costs.

Step 1: Initial Assessment and Inventory

Movers begin by assessing the volume of items, identifying special handling [Best Atlanta Mover's](#) requirements, and creating a detailed inventory list.

Step 2: Budget Planning

Costs are estimated based on distance, weight, labor, packing services, and insurance coverage.

Step 3: Scheduling the Move

Selecting the right date is critical. Businesses often schedule moves during weekends or off-hours to avoid operational disruption.

Step 4: Packing Strategy Development

A customized packing plan is created based on item type, fragility, and departmental organization (for office moves).



Best Atlanta Mover's
3768 Campbellton Rd SW, Atlanta, GA 30331, United States
(404) 369-4648

CHEAP MOVERS ATLANTA

The advertisement features a circular logo with a truck icon and the text 'Best Atlanta Mover's'. Below the logo, the text 'CHEAP MOVERS ATLANTA' is displayed in large, bold, orange letters. To the right, a photograph shows two movers in blue uniforms carrying large cardboard boxes up a staircase. The background of the advertisement is black with a red and white geometric shape on the right side.

Step 5: Execution and Transportation

Items are packed, loaded, transported, and delivered according to a structured timeline designed [Atlanta moving company bestatlantamover.com](#) to maintain efficiency and safety.

Logistics Management in Long Distance and Office Moves

Logistics is one of the most critical aspects of any relocation. It involves coordinating vehicles, labor, routes, timing, and delivery schedules.

Route Optimization

Movers plan the most efficient routes to reduce fuel costs and avoid delays caused by traffic or weather conditions.

Load Management

Proper weight distribution ensures safe transportation and prevents damage during long-distance travel.

Timing Coordination

Deliveries are scheduled to align with building access hours, business operations, or customer availability.

Multi-Stop Deliveries

Some moves require multiple drop-off locations, especially for corporate relocations with several office branches.

Packing Systems and Techniques

Efficient packing is essential for protecting belongings during transit, especially for long-distance and office relocations.

Residential Packing Systems

- Color-coded boxes by room
- Bubble wrap and cushioning for fragile items
- Wardrobe boxes for clothing
- Labeling for quick unpacking

Office Packing Systems

- Department-based labeling (HR, IT, Finance)
- Secure packing for electronics and servers
- Inventory tracking for office equipment
- Sequential unpacking for faster setup

Professional movers use structured systems to ensure nothing is lost, damaged, or misplaced during the relocation process.

Insurance Coverage and Liability Protection

Insurance is a crucial component of any professional moving service. It protects both residential and commercial clients from financial loss due to damage or accidents.

Basic Liability Coverage

This provides minimal protection based on the weight of items being transported.

Full Value Protection

This option ensures that damaged or lost items are repaired, replaced, or compensated at full value.

Specialty Item Insurance

High-value items such as artwork, electronics, or sensitive office equipment may require additional coverage.

Businesses often prefer full coverage to protect expensive infrastructure and reduce financial risk.

Efficient Business Moving Strategies

Office relocation experts use specialized strategies to ensure minimal disruption to operations.



ATLANTA MOVERS

Best Atlanta Mover's
3768 Campbellton Rd SW, Atlanta, GA 30331, United States
(404) 369-4648

Phased Relocation

Departments are moved in stages to keep parts of the business operational during the transition.

After-Hours Moving

Moves are scheduled at night or on weekends to avoid interrupting normal business hours.

IT Pre-Setup

Internet, servers, and communication systems are installed before employees arrive at the new office.

Dedicated Move Coordination

A project manager oversees every stage of the relocation to ensure smooth execution.

Common Challenges in Long Distance and Office Moves

- Unexpected weather delays during transport
- IT system disconnections and reconnections
- Miscommunication between departments
- Building access restrictions
- Underestimated inventory volume

These challenges can be significantly reduced with professional planning and experienced movers.

How to Choose the Right Moving Experts

Selecting the right relocation company is essential for a successful move.

Check Experience and Specialization

Look for movers with proven experience in both long-distance and commercial relocations.

Verify Licensing and Insurance

Ensure the company is properly licensed for interstate transport and provides adequate insurance coverage.

Review Customer Feedback

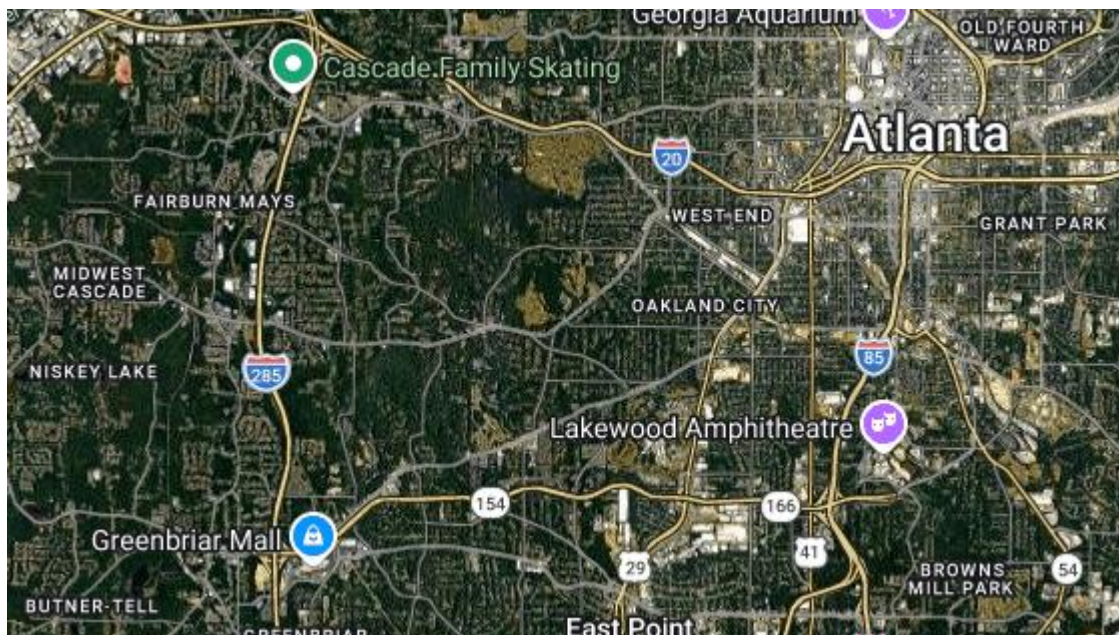
Online reviews and testimonials help assess reliability and service quality.

Request Detailed Estimates

Transparent pricing helps avoid hidden fees and ensures accurate budgeting.

Final Thoughts

Long-distance and office relocations require more than just transportation—they demand planning, coordination, and professional expertise. By understanding logistics, packing systems, insurance options, and efficiency strategies, both individuals and businesses can achieve a smooth transition.





Contact Us:

Best Atlanta Mover's

3768 Campbellton Rd SW, Atlanta, GA 30331, United States

Phone: [\(404\) 369-4648](tel:4043694648)