

Fencing serves as an essential aspect of property management, whether it is for residential or commercial purposes. The choice between the two can significantly impact aesthetics, security, and functionality. Surrey fence builders often encounter clients who are unsure about what type of fencing best suits their needs. Understanding these distinctions can help you make an informed decision that aligns with your goals, budget, and property specifications.

## Understanding the Differences

Residential fencing typically prioritizes aesthetic appeal and privacy. Homeowners often seek to enhance their property's charm while ensuring a sense of security for their families and pets. On the other hand, commercial fencing focuses on functionality and compliance with local laws. It is designed to protect assets, control access, and define boundaries within a business context.

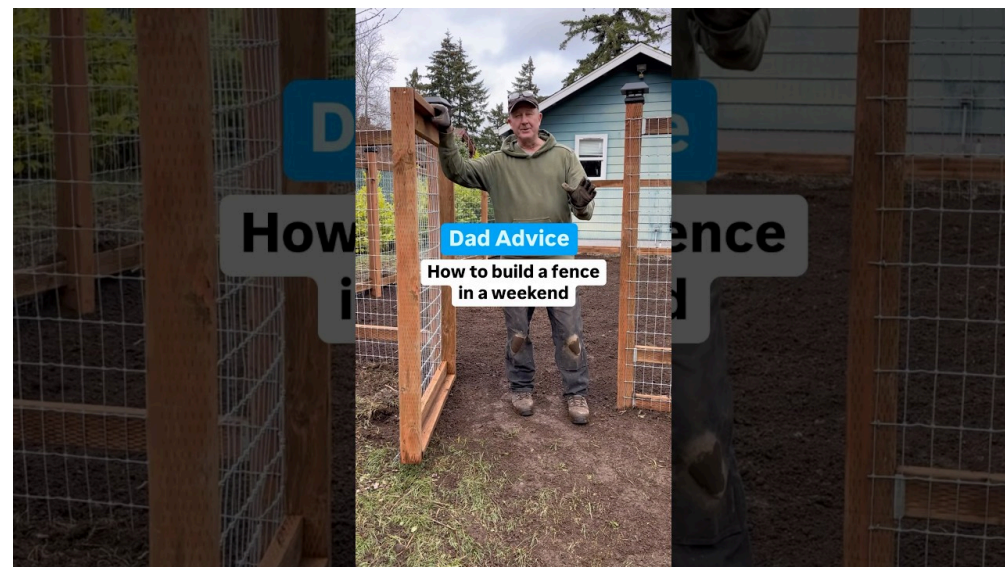
### Aesthetic Considerations

In residential areas, homeowners have a variety of options when it comes to styles and materials. Wood fences are popular for their natural appearance and versatility in design; [reliable fence company surrey](#) they can be painted or stained to match the home's exterior. Vinyl fencing offers durability with low maintenance needs but comes in limited color options. Meanwhile, wrought iron or aluminum fences provide a classic look while allowing visibility into the yard.

Commercial properties may not prioritize aesthetics as much as function. However, first impressions matter; thus, many businesses opt for chain-link fences adorned with fabric or slats for added visual appeal while maintaining security. The choice of materials often reflects brand identity—an upscale restaurant might favor decorative aluminum fencing compared to a warehouse that requires straightforward chain-link solutions.

### Security Features

Security is paramount in both contexts but manifests differently based on the intended use of the property. Residential fences often include features that enhance privacy such as solid panels or taller heights that deter trespassers while still allowing light through.



Commercial fencing must adhere to stricter regulations regarding height and durability. For instance, businesses [surrey fence construction services](#) may require barbed wire or electrified fencing systems as a deterrent against theft or vandalism. This heightened security often aligns with insurance requirements that cover potential liabilities.

## Common Materials Used

When deciding on materials for your fence, consider both longevity and practicality based on your specific needs.

### Residential Fencing Materials

1. **Wood:** A traditional choice known for its warmth and adaptability.
2. **Vinyl:** Provides low maintenance with a clean look; resistant to decay.
3. **Chain-Link:** Cost-effective option offering basic security without obstructing views.

4. **Aluminum:** Lightweight yet durable; ideal for decorative purposes.
5. **Composite:** Made from recycled materials; offers wood-like appearance without high maintenance.

## Commercial Fencing Materials

1. **Chain-Link:** Commonly used due to cost-effectiveness and ease of installation.
2. **Wrought Iron:** Offers strength along with an upscale appearance suitable for public-facing businesses.
3. **Steel Panels:** Heavy-duty option ideal for high-security applications.
4. **Electric Fencing:** Often involves additional safety measures but provides maximum deterrence against unauthorized access.
5. **Barbed Wire:** Enhances existing fences by adding an extra layer of protection.

## Installation Process

The installation process varies between residential and commercial projects due to differences in scale and [licensed fence builders surrey](#) complexity.

For residential fencing:



- Initial consultations usually involve assessing the property lines and discussing design preferences with experienced fence builders in Surrey.
- After obtaining necessary permits—if applicable—the groundwork begins with digging post holes followed by erecting panels.
- Homeowners can expect customization at various stages depending on desired aesthetics.

Conversely, commercial installations require detailed planning:

- Compliance with local zoning laws is crucial; this may involve submitting plans for approval before work commences.
- Projects typically involve larger teams due to scale; therefore timelines may extend based on material availability and site conditions.
- Safety protocols must be strictly adhered to during construction to protect workers and passersby alike.

## Maintenance Requirements

Maintaining your fence is vital regardless of its purpose; however, requirements differ markedly between residential and commercial installations.

Residential fences generally need regular inspections for rot or damage due to weather elements:

- Wooden fences require treatments like staining every few years to prevent decay from moisture exposure.
- Vinyl can be cleaned easily but should be inspected periodically for cracks or fading.

On the commercial side:

- Regular maintenance schedules are often established as part of company operations since failing to maintain a secure perimeter could lead to liability issues.
- Chain-link fences may need tension adjustments over time while steel panels must be checked for rust or corrosion at least annually.

## Cost Considerations

Budgeting effectively ensures that you receive quality service without overspending based on personal financial constraints:

Residential fencing costs can vary widely depending on material choice:

- Basic wooden panels might range from \$15-\$30 per foot installed while more expensive options such as vinyl could go up to \$50 per foot depending on customization features like gates or decorative elements.

Commercial projects usually operate under different pricing structures:



- Chain-link installations could start around \$10-\$20 per foot installed assuming no extensive site preparation is needed while high-security options may exceed \$50 per foot due solely to labor-intensive installation practices involved in securing larger areas safely.

## Factors Affecting Costs

A number of factors influence how much you will pay:

1. Material selection significantly impacts overall expenses—opt for quality over quantity where possible.
2. Site preparation requirements such as removing old fences or clearing debris add costs accordingly.
3. Length of the project timeline correlates directly with labor costs—longer projects inherently incur higher expenses due simply to extended resource allocation over time.

## Conclusion

Choosing between residential versus commercial fencing involves understanding your property's unique needs alongside available options offered by trusted Surrey fence builders specializing in both markets. By weighing factors such as aesthetics against practicality—alongside considering ongoing maintenance responsibilities—you can arrive at an informed decision that enhances both value and security whether designing your dream home landscape or protecting vital business assets effectively against external threats.

By consulting local experts who understand regional regulations while delivering tailored recommendations based upon specific circumstances surrounding each individual project—you will ensure optimal results achieved through professional workmanship delivered efficiently every step along this important journey toward enhanced safety & satisfaction!