

Business Name: BeeHive Homes Assisted Living
Address: 16220 West Rd, Houston, TX 77095
Phone: (832) 906-6460

BeeHive Homes Assisted Living

BeeHive Homes Assisted Living of Cypress offers assisted living and memory care services in a warm, comfortable, and residential setting. Our care philosophy focuses on personalized support, safety, dignity, and building meaningful connections for each resident. Welcoming new residents from the Cypress and surrounding Houston TX community.

[View on Google Maps](#)

16220 West Rd, Houston, TX 77095

Business Hours

- Monday thru Sunday: 7:00am - 7:00pm

Follow Us:

- Facebook: <https://www.facebook.com/BeeHiveHomesCypress>

 **Explore this content with AI:**

[ChatGPT](#) [Perplexity](#) [Claude](#) [Google AI Mode](#) [Grok](#)

Big options often arrive in little moments. The nighttime phone call after an autumn. The third time the cooktop is left on. The stack of unopened mail. These are the signposts many family members acknowledge, the silent nudge that aided living or memory treatment could be the next ideal step. It does not imply failing, and it does not suggest quitting. It means calibrating care to match what your moms and dad requires currently, and preserving what matters most, like security, dignity, and a life that still seems like theirs.

This guide blends functional information with lessons found out at cooking area tables, during trips, and in treatment plan conferences. The objective is to aid you browse choices in Assisted Living and Memory Treatment with clear eyes, practical assumptions, and a plan that fits your family.

Start with a clear image of needs

Before you look for neighborhoods, list what your moms and dad can do on a normal day without aid, what they can do with prompts, and what they can not do securely at all. Different clinical concerns from daily living tasks. If you are assessing assisted living for a parent who still handles most activities yet requires a safety net, that is different from memory care for moms and dads that are wandering, sundowning, or overlooking hygiene as a result of cognitive change.

I like the picture method. Select a current weekday. Map the day from wake-up to bedtime. Just how did drugs get taken? Was showering avoided? Were dishes prepared or microwaved? Any kind of disorientation or frustration? If there is mental deterioration, log patterns, not simply episodes. As an example, "Baffled after 4 p.m., speeds hallway," or "Sleeps in garments, withstands showers more than twice each week." Areas will request this degree of detail throughout analysis, and it will certainly aid establish whether typical Assisted Living or Memory Care fits.

Government and sector checklists can be useful, yet an honest discussion with your parent's medical care carrier is usually more useful. Ask the physician to deal with 2 core questions: is the present living scenario safe, and will this level of demand most likely modification markedly over the following 6 to 12 months? Numerous households wait on a dilemma. Preparation ahead buys you choice.

The difference between Assisted Living and Memory Care

Assisted Living is developed for older adults that need assist with daily jobs, but not the continuous proficient nursing that an assisted living facility offers. It generally uses dishes, housekeeping, medication monitoring, help with bathing and dressing, transport, and a social schedule. Staff proportions differ, however you will certainly see even more freedom and more resident-apartment privacy.

Memory Care is a specialized setup for people dealing with Alzheimer's or other mental deteriorations. Think of it as aided living with added structure, secure entrances, greater personnel training in dementia treatment, changed programs, and design features that minimize confusion and risk. Hallways loophole back to avoid dead-ends, color hints aid with

wayfinding, and outside spaces are secure. Personnel ratios are usually greater, especially during evenings. Tasks are much shorter, much more recurring in the best method, and constructed around preserved abilities. For memory take care of parents that can not securely self-manage, the right program relieves frustration, sustains self-respect, and offers family members a steadier rhythm.

In both setups, treatment is tiered. You pay a base price for the house or space, then a level-of-care fee that tracks the amount of assistance required. This is where shock expenses can lurk, so clearness ahead of time matters.

How to read a community's promises

Every tour appears cozy and friendly. The distinction turns up in the information you do not see at first glance.



I budget 2 sees minimum. The first is the official excursion. The 2nd is an unannounced drop-in around supper or during a shift change, when operations get stretched. I like to ask a local for directions to the dining room, after that follow them. If they can't find it, I intend to see how quickly a personnel notices and steps in. I likewise read the activity schedule against what is really happening. If it says "Chair Yoga exercise at 2," count heads at 2:10. Great communities run late often, but excellent communities also regroup.

When staff talk about "person-centered care," ask for examples. Listen for specifics, like "We switched over Mrs. R's shower time to late morning after noticing her joint inflammation reduces with motion." Obscure approach sounds wonderful. Lived changes tell you the team observes, finds out, and adapts.

Pay interest to sound degrees, odors, and eye call. A pale antibacterial smell reoccurs in any type of medical setup, however persistent smell in corridors mean staffing and housekeeping stress. See whether staff member recognize locals by name. In Memory Treatment, observe how redirection happens. A firm limit with mild tone signifies a skilled group, not a rough one.

The actual cost of treatment, and just how to avoid surprises

Families commonly allocate the base rent, after that get blindsided by care fees. Expect a base rate that covers real estate, basic energies, meals, and social programs. Then anticipate a regular monthly care strategy, valued in degrees or factors. Levels can leap when needs increase, such as adding nighttime incontinence care, two-person transfers, or insulin injections.

There are typically move-in fees, occasionally called community charges, ranging from a couple of hundred bucks up to a couple of thousand. Drug administration is commonly billed per med pass or per medicine set. Transportation to clinical consultations past a certain distance may lug costs. Ask whether there is a yearly rent boost, and what the historic variety has moved than the last 3 to 5 years. A pattern of 3 to 6 percent prevails. In tight labor markets, spikes happen.

If you are mapping cost, think about a five-year horizon. Mental deterioration typically advances. That indicates you could begin in Assisted Living and later on transfer to Memory Care in the exact same area. Ask whether the neighborhood provides both, and whether the monthly cost change is foreseeable. Some neighborhoods waive added move-in fees for inner transfers, others do not. If you expect the demand for memory care for parents within a year or more, starting in a school that consists of both alternatives can spare you a second search.

Long-term treatment insurance coverage can counter expenses if the policy is energetic and criteria are met. Plans usually need help with two or more tasks of day-to-day living or cognitive impairment. Professionals and enduring partners might get approved for Help and Attendance advantages, though the application is paperwork-heavy and slower than family members like. Take into consideration getting in touch with a recognized VA insurance claims representative at no cost, and prevent anybody that requests costs to file. Medicaid insurance coverage for Assisted Living varies by state and program. If funds are restricted, ask each neighborhood directly whether they approve state waiver programs, and under what conditions.

Safety and staffing, not just amenities

The coffee shop and cinema room appearance excellent on a pamphlet, but the foundation is staffing. Prospective families occasionally get reluctant about requesting proportions and training. Don't be. Understanding that is on the flooring and when is fair and necessary.



In Assisted Living, you want to know the amount of care staff and med techs cover each change, and whether a registered nurse gets on site, on-call, or both. Numerous states require a registered nurse to be available, not necessarily present 24/7. If your parent injects insulin, needs wound treatment, or has breakable wellness, ask whether those tasks are dealt with in house or via home health and wellness partners. In Memory Care, inquire about specialized dementia training, frequency of refresher courses, and how new hires are mentored throughout their first weeks. I additionally ask how the team manages sundowning hours. The best programs change staffing later on in the day, strategy comforting tasks, dim stimulative lighting, and see corridors.

Life-safety systems matter as well. Wander-guard technology, door alarm systems, fall discovery options, back-up generators, and emergency drill regularity should become part of your tour conversation. Case reports are confidential, but ask the administrator to define usual events and exactly how they were addressed. You are trying to find patterns and understanding, not perfection.

What excellent day-to-day live looks like

A good area aids locals keep their identity intact. I try to find interaction that fits somebody's previous rate of interests, and for small, gentle routines. If your mother loved horticulture, ask where locals pot natural herbs or water tomatoes. If your papa read the sports web page daily, ask whether newspapers are readily available and if any individual chats concerning last night's video game. In Memory Treatment, individual background guides programming. Folding towels is not busywork when it pleases the requirement to add. Music from somebody's twenties can open up conversational doors. The base test is whether the team sees the individual not just the diagnosis.

Dining is revealing. Enjoy just how the food selection takes care of texture alterations and special diet regimens. Individuals with cognitive disability may endure finger foods far better than utensils, so you will usually see sliders, cut fruit, or handheld quiches that look sensible. Ask to taste a meal. Staff should stand close by, not float, and mild motivates must be normal. In Assisted Living, independent diners ought to look unhurried and comfy, with servers who understand names and preferences.

Apartments do not need to be huge, however they need to feel like home. Bring crucial furnishings, acquainted bed linen, photos, and a favorite chair. In Memory Treatment, keep decor basic, with solid aesthetic signs. A shadowbox near the door with photos and mementos assists with recognition. Tag cabinets with pictures or words. In Helped Living, fall-proof the apartment by eliminating loosened rugs and including night-lights.

When a moms and dad resists

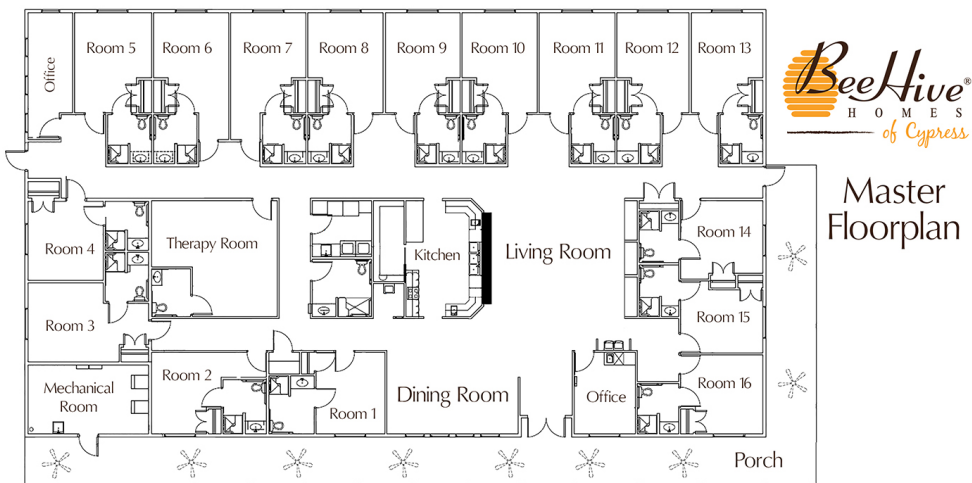
Almost every family experiences resistance. The worry is easy to understand. Home is more than a building. It is control and memory and regimen. Suggesting the reasoning of moving hardly ever functions, particularly for a person with dementia, because the danger they feel is psychological, not factual.

I advise securing the move to a favorable or required factor that protects dignity. You could lean on medical professional's orders. You might frame it as a trial to "rebuild strength after that fall" or a brief stay to "aid with meals while the knee heals." Sometimes the easiest course is for the grown-up child to take the heat. "I worry much less when I recognize a person is there in the evening," is a lot more sincere and much less confrontational than, "You can not be alone anymore."

In higher-resistance scenarios, a neutral 3rd party assists. A trusted physician, clergy member, or family members close friend can say, "This location is worth a shot." If memory is included, avoid prolonged discussions. Consistent, tranquil repeating and a clear plan beat marathons of persuasion. Set an action date, align a mild move-in, and maintain the very first couple of days simple.

How to contrast neighborhoods fairly

If you check out 3 or four areas, details obscure. Bring a simple scorecard that captures what you value, not what the pamphlet highlights. After tours, fill it in prior to perceptions fade.



- Non-negotiables: safety attributes, capability to deal with present clinical demands, staff proportions, and registered nurse availability.
- Care quality: evidence of team training, uniformity in activity follow-through, and how the group individualizes plans.
- Culture: warmth, eye contact, resident involvement, and exactly how leaders reply to difficult questions.
- Apartment and setting: tidiness, sound degrees, lights, and layout.
- Cost security: base price, treatment level framework, drug management fees, transportation, and historic increases.

Note the weekday and time of your browse through. A warm Tuesday at 10 a.m. can really feel different than a stormy Friday at 5 p.m.

Planning the step without overwhelm

Moves go better when jobs are sequenced. 2 weeks prior to move-in, confirm the care analysis and see to it the community's analysis matches your experience. Provide the medication listing, medical professional calls, and any type of long lasting clinical devices needs. If you use a mail-order drug store, change refills to the area's favored drug store to stay clear of a gap.

Pack gently at first, after that layer in much more personal belongings. Tag clothes. Place the most acquainted items where your moms and dad will certainly see them on day one. If your moms and dad has mental deterioration, keep the initial day brief and foreseeable. Show up mid-morning. Eat lunch on site. Stay long enough to clear up, after that leave with a clear handoff to team. Anticipate the initial week to be wobbly. New regimens take time to stick.

Assign one family member as the main point of call for the area. This lowers miscommunication and ensures continuity. Maintain brother or sisters in the loop, however pick one channel, like a shared paper or a regular call, instead of team messages at all hours.

Red flags that must offer you pause

A pristine entrance hall can conceal staffing pressure. Some indication are refined. If team appear rushed and stay clear of eye call, or if telephone call lights are lit for lengthy stretches, staffing may be slim. Task calendars filled with enthusiastic programs, yet empty spaces at the scheduled times, suggest advertising outpacing implementation. High management turnover is one more flag. Ask how long the executive director and registered nurse have actually remained in their duties. Continuous spin normally translates to inconsistent care.

Be cautious if rates is vague or if the assessment procedure really feels stock. Neighborhoods that under-assess at move-in sometimes raise care levels suddenly after a month, which stresses count on and budget plan. If the sales pitch consists of pledges that contradict created plans, slow down and request clarification in writing. Last but not least, pay attention to your moms and dad's digestive tract. If they claim a place really feels cold or chaotic, invest even more time there at various hours to test that impression.

When care requires change

Change is the rule in elder care. Also in Assisted Living, someone independent today might require aid tomorrow after a hospitalization or a medication change. See exactly how the community manages step-ups in treatment. A good team calls early, clarifies the factor for a degree adjustment with concrete instances, and provides a strategy to examine the modification after a collection duration. If your moms and dad transfers to Memory Treatment, request for a cozy handoff with known staff, and carry over personal routines that function, such as preferred shower times or quiet morning coffee before chatter.

In advanced dementia, goals of care change. Convenience, purposeful link, and minimizing distress matter greater than rigorous treatment goals. Hospice can function along with Memory Treatment, using an additional layer for signs and symptom management and family members assistance. That is not surrendering. It is picking the ideal priorities for the stage.

Working with the group as a true partner

Families and staff do their finest collaborate when communication is constant and considerate. Share what you recognize. If your mommy always takes pills with applesauce or will only bath after coffee, inform the caretakers on day one. Update the account when things alter. Participate in care plan meetings and bring inquiries in creating. If something

problems you, elevate it quickly with the best person, not just the very first person you see. A med error belongs with the registered nurse. A housekeeping issue mostly likely to maintenance or housekeeping leadership. Keep notes and adhere to up.

Gratitude aids morale, and spirits aids care. A fast thank-you to a night-shift assistant that rested with your father through a challenging night is not a little point. Neither is promoting for your moms and dad comfortably and constantly when needed. Both can be real at once.

Special considerations for couples

When one partner needs Memory Care and the other stays even more [senior living](#) independent, households deal with tough choices. Some neighborhoods enable the healthier partner to reside in Assisted Living while the various other lives in Memory Treatment on the same campus. Daily gos to and shared meals aid. If both transfer to Memory Care, inquire about personal or adjacent rooms and just how the group sustains their regimens as a pair. If only one partner steps, be reasonable concerning the caregiver partner's endurance. In some cases the most effective method to look after both is to accept assistance for the one who needs more support.

Practical, short checklist for the very first month

- Meet the registered nurse, med tech lead, and the executive supervisor within the initial week. Exchange ideal contact info.
- Verify the medication listing after the very first refill cycle. Catch mistakes early.
- Drop by at different times, consisting of early night. Observe regimens and transitions.
- Ask for a 30-day care strategy assess to verify the level-of-care invoicing lines up with needs.
- Bring one small, personal activity weekly, like an image cd session or music playlist, and reveal team what works.

A note on guilt and grief

Even when the step goes well, shame sneaks in. Lots of grown-up children feel they must have done a lot more or waited longer. Those sensations require air, not rejection. You are not failing your parent by selecting Assisted Living or Memory Care. You are acknowledging that the care they require is larger than a single person's endurance or a house's layout. Allow the community do what it is constructed to do, so you can return to being a daughter or son greater than a full-time caregiver.

How to find the ideal suit your area

Start with a broad map of choices within a reasonable drive. If your moms and dad's doctors and good friends are in one town, proximity assists connection. Ask professionals that see many family members make these selections: hospital discharge organizers, geriatric treatment managers, social employees, or your moms and dad's physician. They frequently recognize which communities manage intricate situations well, which ones interact reliably, and where management is stable.

Online testimonials can be a useful initial filter, yet reviewed them as pictures, not scripture. Patterns throughout multiple evaluations matter more than a solitary glowing or scathing blog post. When doubtful, go see on your own, then go again unannounced.

If you hit a waiting list, ask how commonly it relocates and whether a down payment holds your spot. Think about reprieve stays as a bridge. A short-term keep lets your moms and dad example life in the neighborhood and can ease the change to an irreversible move.

Final ideas to maintain you oriented

The heart of this choice is not the light fixture in the lobby or the size of the house. It is the day in, day out treatment your parent will certainly get, and whether the area's rhythm fits the way your parent lives. Assisted Living and Senior Citizen Care are not one-size-fits-all. Good Elder Care appreciates background, adapts to transform, and treats tiny moments as the whole point.

Give yourself permission to ask hard questions, to take your time when you can, and to relocate quickly when security requires it. Maintain your moms and dad's voice at the facility, even when their cognition makes words more difficult to

find. When you match demands with the best assistance, life frequently gets bigger once more. Dishes get shared. Songs return. Worry shrinks. That is the peaceful promise of an appropriate area, and for many family members, it is the difference between coping and living.

BeeHive Homes Assisted Living is an Assisted Living Facility
BeeHive Homes Assisted Living is an Assisted Living Home
BeeHive Homes Assisted Living is located in Cypress, Texas
BeeHive Homes Assisted Living is located Northwest Houston, Texas
BeeHive Homes Assisted Living offers Memory Care Services
BeeHive Homes Assisted Living offers Respite Care (short-term stays)
BeeHive Homes Assisted Living provides Private Bedrooms with Private Bathrooms for their senior residents
BeeHive Homes Assisted Living provides 24-Hour Staffing
BeeHive Homes Assisted Living serves Seniors needing Assistance with Activities of Daily Living
BeeHive Homes Assisted Living includes Home-Cooked Meals Dietitian-Approved
BeeHive Homes Assisted Living includes Daily Housekeeping & Laundry Services
BeeHive Homes Assisted Living features Private Garden and Green House
BeeHive Homes Assisted Living has a Hair/Nail Salon on-site
BeeHive Homes Assisted Living has a phone number of (832) 906-6460
BeeHive Homes Assisted Living has an address of 16220 West Road, Houston, TX 77095
BeeHive Homes Assisted Living has website <https://beehivehomes.com/locations/cypress>
BeeHive Homes Assisted Living has Google Maps listing <https://maps.app.goo.gl/G6LUPpVYiH79GEtf8>
BeeHive Homes Assisted Living has Facebook page <https://www.facebook.com/BeeHiveHomesCypress>
BeeHive Homes Assisted Living is part of the brand BeeHive Homes
BeeHive Homes Assisted Living focuses on Smaller, Home-Style Senior Residential Setting
BeeHive Homes Assisted Living has care philosophy of “The Next Best Place to Home”
BeeHive Homes Assisted Living has floorplan of 16 Private Bedrooms with ADA-Compliant Bathrooms
BeeHive Homes Assisted Living welcomes Families for Tours & Consultations
BeeHive Homes Assisted Living promotes Engaging Activities for Senior Residents
BeeHive Homes Assisted Living emphasizes Personalized Care Plans for each Resident
BeeHive Homes Assisted Living won Top Branded Assisted Living Houston 2025
BeeHive Homes Assisted Living earned Outstanding Customer Service Award 2024
BeeHive Homes Assisted Living won Excellence in Assisted Living Homes 2023

People Also Ask about BeeHive Homes Assisted Living

What services does BeeHive Homes Assisted Living of Cypress provide?

BeeHive Homes Assisted Living of Cypress provides a full range of assisted living and memory care services tailored to the needs of seniors. Residents receive help with daily activities such as bathing, dressing, grooming, medication management, and mobility support. The community also offers home-cooked meals, housekeeping, laundry services, and engaging daily activities designed to promote social interaction and cognitive stimulation. For individuals needing specialized support, the secure memory care environment provides additional safety and supervision.

How is BeeHive Homes Assisted Living of Cypress different from larger assisted living facilities?

BeeHive Homes Assisted Living of Cypress stands out for its small-home model, offering a more intimate and personalized environment compared to larger assisted living facilities. With 16 residents, caregivers develop deeper relationships with each individual, leading to personalized attention and higher consistency of care. This residential

setting feels more like a real home than a large institution, creating a warm, comfortable atmosphere that helps seniors feel safe, connected, and truly cared for.

Does BeeHive Homes Assisted Living of Cypress offer private rooms?

Yes, BeeHive Homes Assisted Living of Cypress offers private bedrooms with private or ADA-accessible bathrooms for every resident. These rooms allow individuals to maintain dignity, independence, and personal comfort while still having 24-hour access to caregiver support. Private rooms help create a calmer environment, reduce stress for residents with memory challenges, and allow families to personalize the space with familiar belongings to create a “home-within-a-home” feeling.

Where is BeeHive Homes Assisted Living located?

BeeHive Homes Assisted Living is conveniently located at 16220 West Road, Houston, TX 77095. You can easily find direction on [Google Maps](#) or visit their home during business hours, Monday through Sunday from 7am to 7pm.

How can I contact BeeHive Homes Assisted Living?

You can contact BeeHive Assisted Living by phone at: [832-906-6460](tel:832-906-6460), visit their website at <https://beehivehomes.com/locations/cypress>, or connect on social media via [Facebook](#)

We are near [Houston Premium Outlets](#), easy and close shopping while visiting mom in our assisted living home.