

When enhancing your property with a new fencing installation, it's easy to overlook the potential of gates and arbors. These elements can transform an ordinary fence into a stunning feature that elevates the aesthetics and functionality of your outdoor space. Whether you're working with local fence builders in Surrey or tackling a DIY project, incorporating gates and arbors requires thoughtful consideration and creativity.

The Importance of Gates and Arbors

Gates serve as both functional entry points and decorative details that frame your property. A well-designed gate not only provides access but also enhances security. Meanwhile, arbors add vertical interest and charm, creating a focal point in your landscape design. Together, they can create a seamless transition between different areas of your yard while inviting visitors into your garden or outdoor space.

Choosing the Right Style

Selecting the right style for your gates and arbors is crucial. Your choices should align with both the architecture of your home and the overall theme of your landscaping. For instance, if you have a traditional home, consider classic wooden gates with elegant detailing. In contrast, modern homes might benefit from sleek metal designs with minimalist lines.

Wooden Gates: These offer warmth and can be customized easily, allowing for various finishes. Cedar or redwood are popular choices due to their natural resistance to decay.

Metal Gates: Options like wrought iron provide durability and security while adding an industrial flair. They can be ornate or simple, depending on your preference.

Vinyl Gates: These are low-maintenance alternatives that mimic wood's appearance without the upkeep. They come in various colors and styles to suit different aesthetics.

Arbors can mirror these styles as well; consider using similar materials to create consistency across your fencing installation.

Functional Considerations

While aesthetics are important, you also need to consider how gates and arbors will function within your space. The size of the gate should correlate with its intended use; for instance, a larger gate may be necessary for vehicles or heavy equipment access, while smaller pedestrian gates suffice for foot traffic.

Placement Matters

Think strategically about where to place gates and arbors. Positioning an arbor at the entrance of a garden path can guide visitors' eyes toward lush greenery while providing shade during warmer months. If you have multiple areas in your yard separated by fences, consider placing gates at each juncture to facilitate movement throughout the space without compromising security.

Additionally, when planning gate placement along with fencing installation, consult experienced fence builders in Surrey [surrey fence company](#), who can advise on local regulations regarding height restrictions or setbacks that may affect where you can install these features.

Enhancing Your Landscape Design

Gates and arbors do more than just provide access; they also play significant roles in landscape design by adding layers of depth and interest to otherwise flat spaces.

Incorporating Climbing Plants

One effective way to enhance an arbor is by incorporating climbing plants like wisteria or clematis that flourish in sunny spots. As these plants grow over time, they will drape gracefully over the structure, creating a natural canopy that adds privacy as well as beauty.

Moreover, consider planting perennial flowers along pathways leading up to the gate or [top fence company surrey bc](#) around the base of the arbor for additional color throughout different seasons. This approach not only beautifies but also creates an inviting atmosphere that encourages exploration within your garden.

Lighting Features

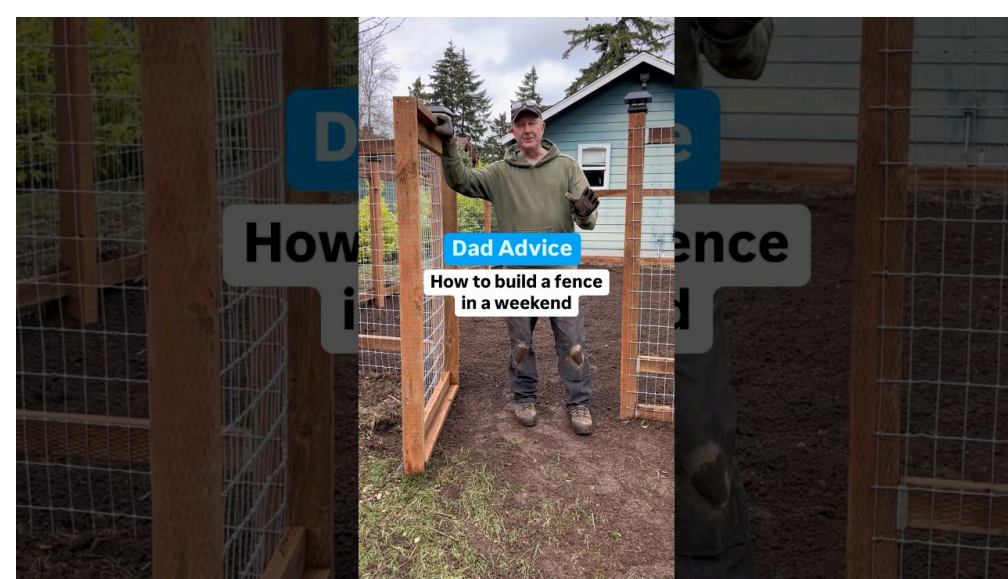
Don't underestimate the impact of lighting when designing around gates and arbors. Installing soft LED lights along pathways or strategically placed solar lights on top of an arbor can illuminate these structures at night, enhancing their visual appeal after dark while improving safety for those navigating through your yard.

Practical Uses Beyond Aesthetics

The addition of gates and arbors provides opportunities for practical uses beyond mere decoration:

1. **Creating Defined Spaces:** Use gates to segment different sections of your yard such as gardens separate from entertainment areas.
2. **Improving Security:** A solid gate acts as a deterrent against intruders while maintaining aesthetic appeal.
3. **Encouraging Wildlife:** An open arbor allows birds or beneficial insects easy access into gardens while keeping gardening spaces accessible.
4. **Incorporating Seating Areas:** Add benches under large arbors for shaded seating where family members can relax amidst nature.
5. **Supporting Structures:** Consider using sturdy arbors as trellises for growing fruits like grapes or vegetables that require support systems.

These practical applications illustrate how functional designs contribute significantly to enhancing both usability and beauty in outdoor spaces.



Customization Options

Working with trusted fence companies in Surrey gives you access to custom solutions tailored specifically to fit your vision—whether you're looking for handcrafted wooden designs or prefabricated metal options designed for quick assembly.

Custom features could include personalized engravings on gates reflecting family names or symbols meaningful to you—such details elevate simple structures into statement pieces that tell stories about those who occupy them.

Color Schemes

Color plays an essential role in how these features blend with existing landscapes; choosing hues that echo those found within nearby flora ensures harmony across all elements installed during fencing work—consider shades like deep greens or subtle earth tones rather than stark contrasts which may clash visually against nature's palette.

Maintenance Tips

Maintaining gates and arbors ensures longevity so that they remain beautiful assets rather than burdensome liabilities over time:

- Regularly check hinges on gates every few months; lubricate them as needed.
- Inspect wooden components annually; treat them against rot using appropriate sealants every few years.
- Ensure any climbing plants do not obstruct views out through open gateways; trim back aggressive growers promptly.
- Clean surfaces periodically based upon material type—metal may require rust inhibitors whereas wood may need sanding down before re-staining once weathered significantly over time.

By addressing these maintenance needs proactively rather than reactively—homeowners create environments where outdoor living flourishes uninterrupted by avoidable issues stemming from neglectful care practices applied towards key structures present within backyards today!



Conclusion

Incorporating gates and arbors alongside newly installed fencing offers countless creative possibilities for enhancing both visual appeal & functionality around properties everywhere! By thoughtfully selecting styles matching architectural themes while considering practical uses combined with personalized customization options available through local experts—you'll transform ordinary yards into extraordinary spaces filled with [commercial fence builders surrey](#) character charm all year long!

